

ADVANCED COMPOSITES



THE CLIENT

CCP Gransden – delivering performance improvements through the intelligent use of advanced composites for a wide range of notable clients all over the world. CCP Gransden is a UK-based family business with a rich engineering heritage, constantly advancing, successfully supporting countless projects right through from concept to commercialisation, across a diverse range of ventures.



Composites



Temp: lower than 30C
RH: above 35%



90m²

THE BRIEF

The client, specialists in composites manufacturing, engaged the Guardtech Group to deliver a cleanroom with dry conditions in order to house a filament-winding process. Guardtech Cleanrooms were selected to deliver a high-performance 90sqm modular cleanroom in an existing warehouse space in Northern Ireland.



“The end result is fantastic. Workmanship and quality outstanding...”

Richard Bateson, Operations Director at CCP Gransden, said: “Guardtech Group Site Project Manager Craig Druce was a real pleasure to work with. You and the Guardtech team balanced production with improvement and the end result is fantastic! Workmanship and quality outstanding. Thank you!”

Richard Bateson
Operations Director
at CCP Gransden





THE TECH SPECS

A controlled environment designed, installed, cleaned and commissioned by Guardtech built to the following specification:

- ◆ **Structural:** GT Shell Pro, GT Strip Max & GT Lid Plus supported by free-standing steel frame, GT Access Plus doors, 2 x 6mm laminated safety glass, GT Deck Pro flooring system.
- ◆ **Electrical:** GT Lux Plus 500 lux LED lighting panels, 20 x 13amp double sockets, 5 x RJ45 data outlets, PVC trunking.
- ◆ **Mechanical:** GT Flow Lite H14 HEPA Fan Filter Units Gel-Sealed with Roomside Filter Change, GT Air Pro CRAC unit providing temperature & humidity control.

THE CHALLENGES

This was a relatively straightforward modular cleanroom installation from Guardtech Cleanrooms. However, there were a few challenges

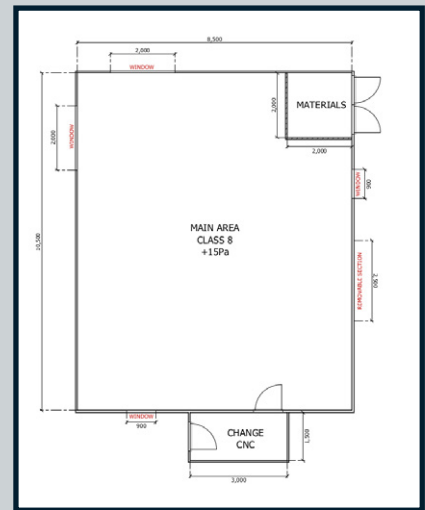
that the team overcame in delivering yet another first-rate modular solution.

Overseas operations: The Guardtech Group have become well versed in operating overseas now – with as many as nine international projects running concurrently shortly after this build was completed.

That being said, there are always logistical issues that come with overseas projects involving customs, deliveries and such, and the Guardtech Cleanrooms team needed to remain malleable throughout this project to ensure there was no hold-up in the schedule.

Steely determination: This project featured a free-standing steel framework – and therefore required us to work with a local supplier that had BS EN1090 Execution Class 2 accreditation. Execution Class 2 comprises all supporting structures made of steel up to strength class S700 and structural components made of aluminium alloys.

It was critical that the structural integrity of the framework was up to standard to ensure the cleanroom would not only be safe, but perform as required, and the Guardtech Cleanrooms team worked well with



the local supplier to ensure every aspect of the steel framework was delivered to the highest standard.

Gateway to the future: Every Guardtech Cleanrooms and Cleanroom Solutions design process takes into account the ongoing growth of our clients' operations. This project was no different, with a 3.5m x 3m removable wall intelligently installed to future proof for increased production demands as well as an additional machinery transit route.

Quick turnaround: As mentioned, this was a relatively standard Guardtech

ADVANCED COMPOSITES

Contact Us



🏠 Guardian House
Unit 1A Homefield Road,
Haverhill, CB9 8QP

☎ 0330 113 0303

✉ sales@guardtech.com

🖱 www.guardtechgroup.com



Cleanrooms modular build, which meant that our experienced team was able to deliver the project on time and on budget in around five weeks.

Going live: The build took place within the confines of a live application – so the Guardtech Cleanrooms team had to ensure the construction process did not interfere with the client's active procedures. Not only did the factory continue to run process effectively, but there were no incidents whatsoever to cause any undue stress to the effective continuation of the business' operations.

THE RESULT

Richard Bateson, Operations Director at CCP Gransden, said: "Guardtech Group Site Project Manager Craig Druce was a real pleasure to work with.

"You and the Guardtech team balanced production with improvement and the end result is fantastic! Workmanship and quality outstanding. Thank you!"

